

Table (23): Robustness regarding organic modified in mobile phase (-5%)

| Parameters | Mobile phase (60:40) | | Mobile phase (55:45) | |
|--------------------|----------------------|-----------|----------------------|-----------|
| | Esomeprazole | Tadalafil | Esomeprazole | Tadalafil |
| Average Area | 1299576 | 1044488 | 1246202 | 928806 |
| RSD% | 0.28 | 1.19 | 1.58 | 1.89 |
| Theoretical plates | 9017 | 9907 | 4973 | 5962 |
| Asymmetry | 1.06 | 1.03 | 0.92 | 0.93 |
| Resolution | N.A | 4.15 | N.A | 2.27 |

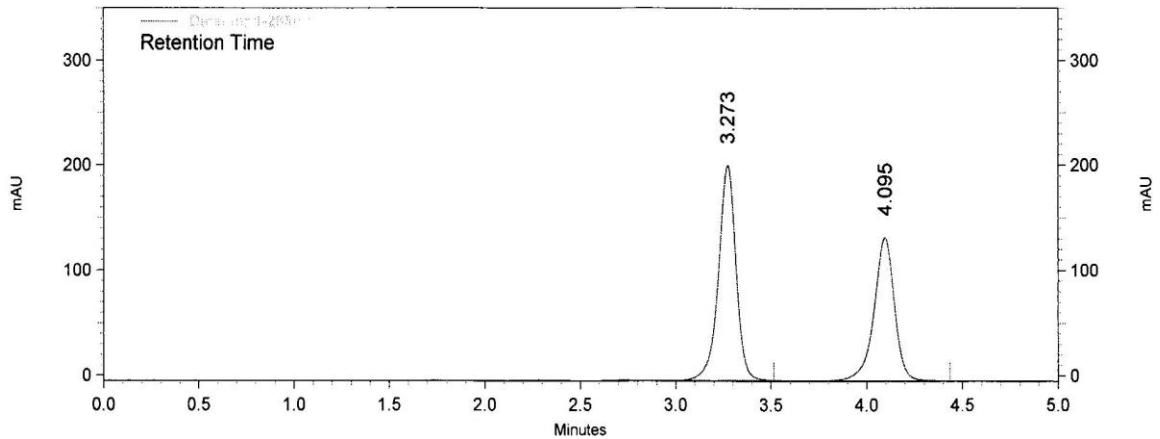


Figure (28): Robustness chromatogram in mobile phase (-5%)

The results in the above tables show that the $RSD\% < 2\%$ and chromatograms in figures above gave indication that the method is robust.